

Sat-Fi2 firmware updates can be performed via the Sat-Fi2 App or using the Sat-Fi2 Web Console. The below instructions detail the process for updating the Sat-Fi2 using the Sat-Fi2 Web Console.

Step 1 – Download Sat-Fi2 Firmware Update

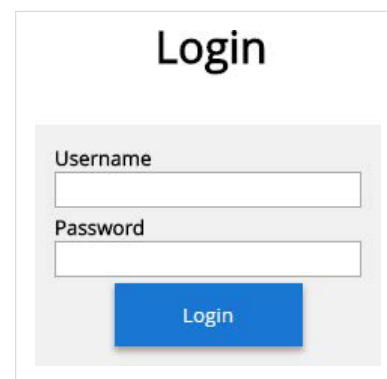
1. Prior to downloading the update, delete any previous versions of Sat-Fi2 “update_sat_fi_2_revm_production_x_xx.zip” that are in your download directory.
2. On a Wi-Fi enabled computer, open a web browser and proceed to the [Sat-Fi2 product page](#).
3. Scroll to **Downloads and Links** section and download the Sat-Fi2 Firmware Update.
4. Save the update to your computer, do not attempt to run the program directly.

Step 2 – Connect to the Sat-Fi2 Wireless Network

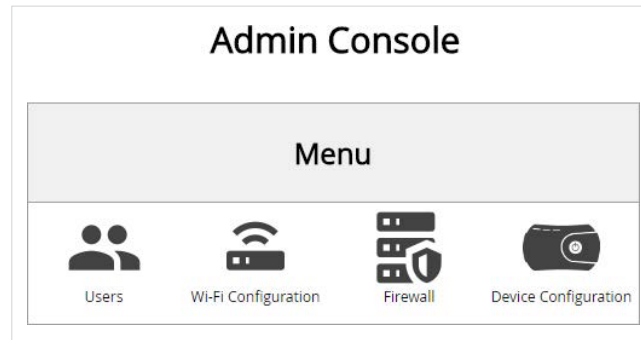
1. On a laptop, turn on the Wi-Fi connection and connect to the SatFi2_<XXXXXX> network (<XXXXXX> is the ICCID number of the Sat- Fi2 device) **Example: satfi2_004595**
2. A Wi-Fi connection dialog will be displayed. In the Password text-entry field, enter the appropriate password. (Default Password is **satfi1234**)
3. Press the **Connect** button.

Step 3 – Access the Sat-Fi2 Web Console


1. Open a web browser.
2. In the address bar enter: <http://192.168.1.1:8080> (Can also be 192.168.0.1:8080)
3. A Sat-Fi2 Login screen will be displayed.
 - In the **Username** field, enter the Admin Username (Default is **admin**)
 - In the Password field, enter the password (Default is **admin**)
 - Select the **Login** button.
4. The Sat-Fi2 Admin Console screen will be displayed.

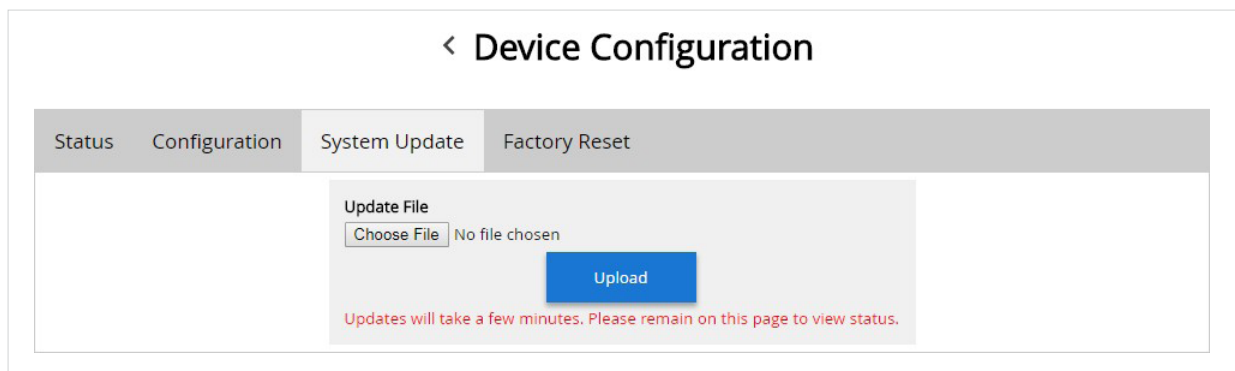


The screenshot shows a login interface with the title "Login" at the top. Below the title are two input fields: "Username" and "Password". The "Username" field is currently empty. Below the "Password" field is a blue button labeled "Login".



Step 4 – Perform Firmware Update

1. On the Admin Console Menu screen select .
2. The Device Configuration screen will be displayed, select the System Update tab.



3. Select the **Choose File** button and navigate to and select the Sat-Fi2 firmware update downloaded in Step 1 – Download Sat-Fi2 Firmware Update.
The update must be named “update_sat_fi_2_rev_m_production_x_xx.zip”. Any other name will result in a failure to update.
4. Select the **Upload** button to start the firmware upload process.
WARNING: Once the Upload button has been selected, do not power off the Sat-Fi2 unit during the upgrade process. Doing so may render the device inoperable.
5. After the firmware is uploaded the Update process will begin.



6. When the firmware update is complete the Sat-Fi2 will reboot and you will be disconnected from the Sat-Fi2 Wi-Fi network. The Firmware Update is complete and ready for use.