

Sat-Fi2 RAS firmware updates can be performed via the Sat-Fi2 App or using the Sat-Fi2 RAS Web Console. The below instructions detail the process for updating the Sat-Fi2 RAS using the Sat-Fi2 RAS Web Console.

## Step 1 – Download Sat-Fi2 RAS Firmware Update

1. Prior to downloading the update, delete any previous versions of Sat-Fi2 RAS “update\_ras\_production\_x\_x\_xx.zip” that are in your download directory.
2. On a Wi-Fi enabled computer, open a web browser and proceed to the [Sat-Fi2 RAS product page](#).
3. Scroll to **Downloads and Links** section and download the Sat-Fi2 RAS Firmware Update.
4. Save the update to your computer, do not attempt to run the program directly.

## Step 2 – Connect to the Sat-Fi2 RAS

### Via Wireless Network

1. On a laptop, turn on the Wi-Fi connection and connect to the SatFi2\_<XXXXXX> network (<XXXXXX> is the ICCID number of the Sat- Fi2 device) **Example: satfi2\_004595**
2. A Wi-Fi connection dialog will be displayed. In the Password text-entry field, enter the appropriate password. (Default Password is **satfi1234**)
3. Press the **Connect** button.

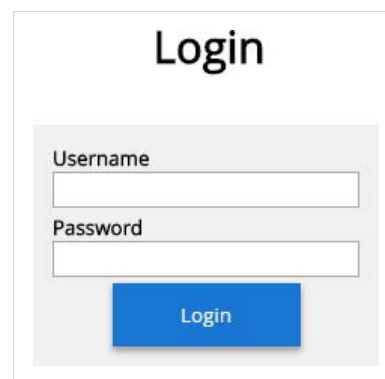
OR

### Via Wired Ethernet Connection

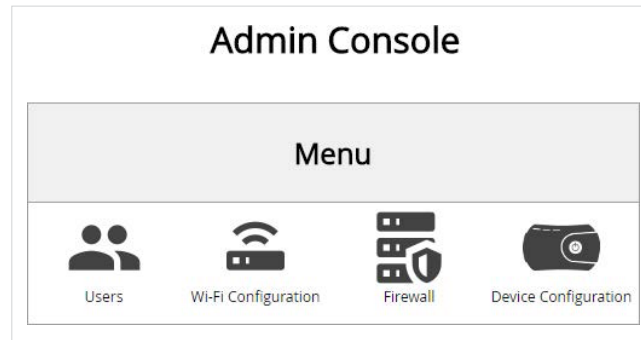
1. Connect Ethernet cable to the Sat-Fi2 RAS and the computer. Ensure the device completely booted up by looking at the Power and Satellite LEDs.

## Step 3 – Access the Sat-Fi2 RAS Web Console


1. Open a web browser.
2. In the address bar enter: <http://192.168.1.1> (Can also be [192.168.0.1](http://192.168.0.1))
3. A Sat-Fi2 RAS Login screen will be displayed.
  - In the **Username** field, enter the Admin Username (Default is **admin**)
  - In the Password field, enter the password (Default is **admin**)
  - Select the **Login** button.
4. The Sat-Fi2 RAS Admin Console screen will be displayed.

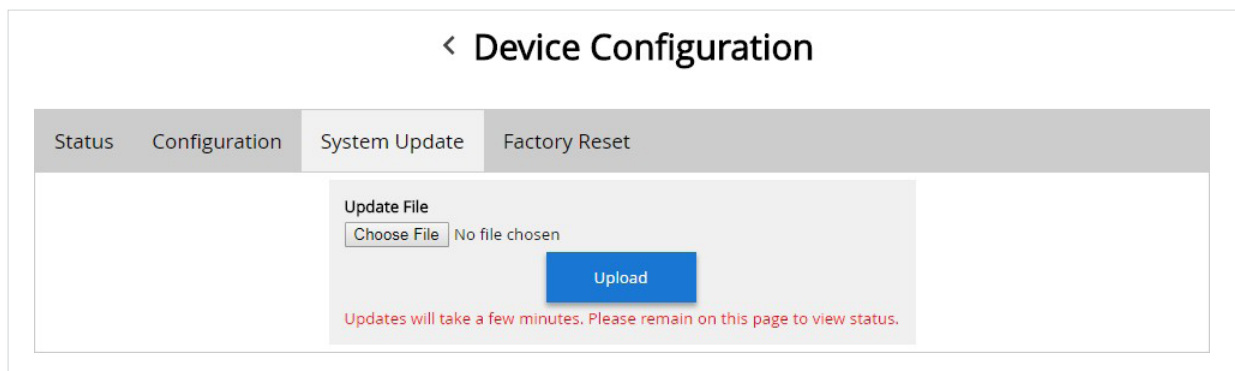


The screenshot shows a web browser window with the title "Login". It contains two input fields: "Username" and "Password". Below the "Password" field is a blue button labeled "Login".



## Step 4 – Perform Firmware Update

1. On the Admin Console Menu screen select .
2. The Device Configuration screen will be displayed, select the System Update tab.



3. Select the **Choose File** button and navigate to and select the Sat-Fi2 RAS firmware update downloaded in Step 1 – Download Sat-Fi2 RAS Firmware Update.  
The update must be named “update\_ras\_production\_x\_x\_xx” any other name will result in a failure to update.
4. Select the **Upload** button to start the firmware upload process.  
**WARNING: Once the Upload button has been selected, do not power off the Sat-Fi2 RAS unit during the upgrade process. Doing so may render the device inoperable.**
5. After the firmware is uploaded the Update process will begin.  
**The update could take up to 15+ minutes.**



6. When the firmware update is complete the Sat-Fi2 RAS will reboot and you will be disconnected from the Sat-Fi2 RAS Wi-Fi network. The Firmware Update is complete and ready for use.