



Globalstar 9600

Firmware Update Instructions v2



Table of Contents

- 1. OVERVIEW 1**
 - ABOUT THIS GUIDE..... 1
 - EQUIPMENT NEEDED 1
- 2. FIRMWARE UPDATE..... 2**

1. OVERVIEW

About This Guide

This firmware update guide steps through all aspects of downloading and installing the GSP-9600 firmware. Please be sure to read this guide thoroughly and retain it for future reference.

Equipment Needed

- Computer with Wi-Fi capability
- Globalstar GSP-9600
- Globalstar GSP9600-v1.63b8 Firmware Update File

2. FIRMWARE UPDATE

Perform the following to update your Sat-Fi firmware:

Step 1 Download the GSP-9600 firmware update (gsp9600-v1.63.bin) to your Wi-Fi enabled computer: [Click Here>>](#)

NOTE: Save the program to your computer, do not attempt to run the program.

NOTE: For the below steps the Wi-Fi antenna and power cable must be connected to the Sat-Fi. The Sat-Fi external satellite antenna DOES NOT need to be connected.

Step 2 Turn on the Sat-Fi unit.

Step 3 On your computer, open the Network Sharing Center and view the Wi-Fi connections that are available.

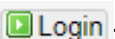
Step 4 Select **wXa<XXXXXX>** (<XXXXXX> is a unique identifier for that specific Sat-Fi Unit), and click on **Connect**.

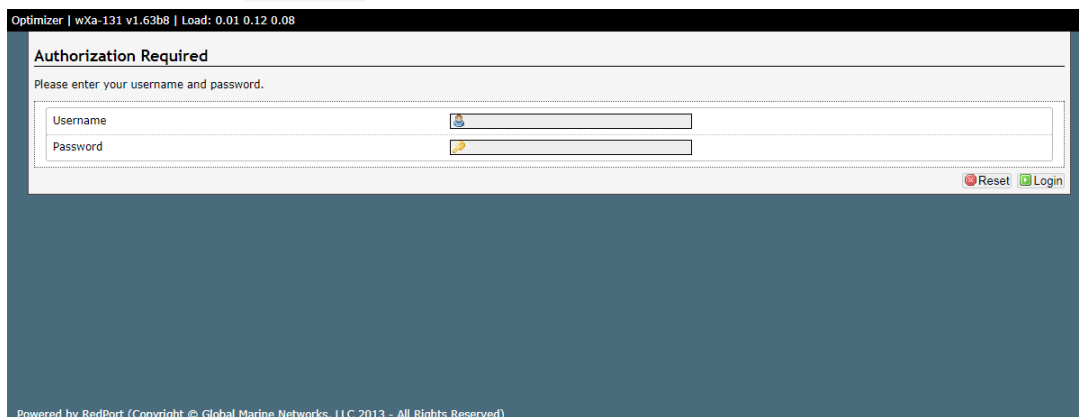
Step 5 The Connection dialog will display **Connected**.



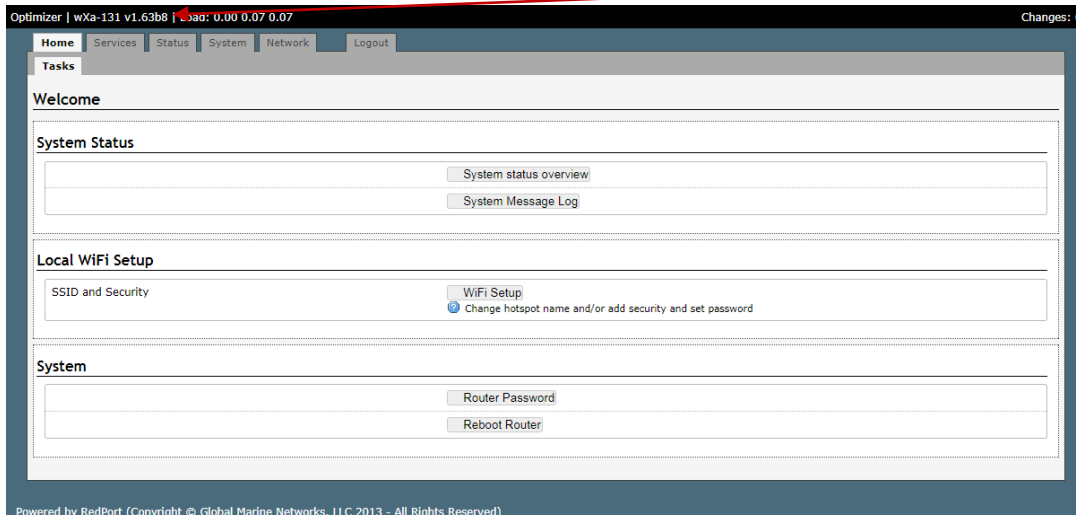
Step 6 Open a web browser and in the address bar enter <http://192.168.1.1> to access the GSP-9600 user interface.

Step 7 A Windows Security dialog will be displayed. Perform the following:

- In the **Username** field, enter **superadmin**
- In the **Password** field, enter **webxaccess**
- Select  **Login**.



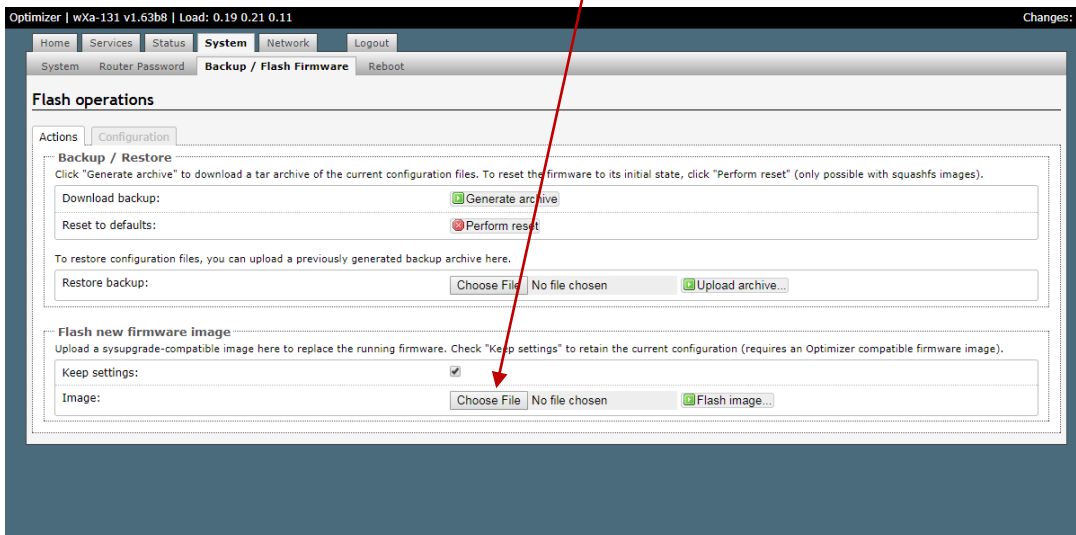
Step 8 The GSP-9600 User Interface should be displayed. Check the status bar and verify the firmware version. If the version is not **v1.63b8** proceed to the next step.




NOTE: If it is v1.63b8 you do not need to update your firmware.

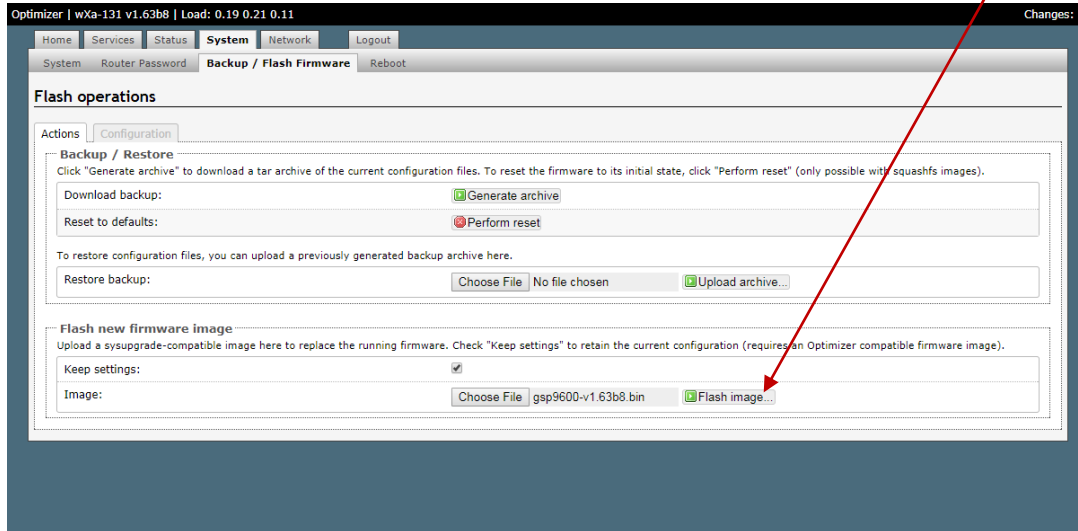
Step 9 If the version is v1.61 or lower, select the **System** and then the **Backup / Flash Firmware** tabs.

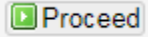
Step 10 The Flash operations screen will be displayed. In the **Flash new firmware image** section, select **Choose File**.

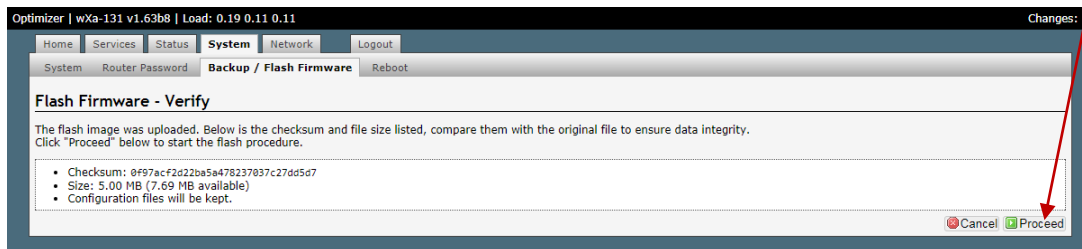


Step 12 An Open dialog will be displayed. Navigate to where the **gsp9600-v1.63.bin** (downloaded in Step 1) is located and select the file.

Step 13 The selected file will be displayed. Select  .

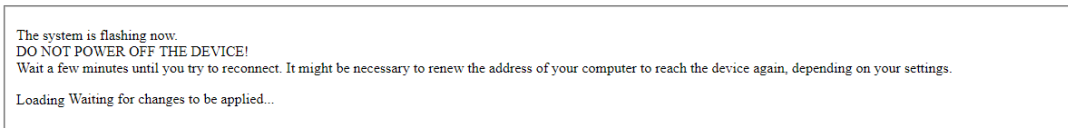


Step 14 A Flash Firmware – Verify screen will be displayed. Select  .



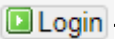
Step 15 A System - Flashing screen will be displayed.

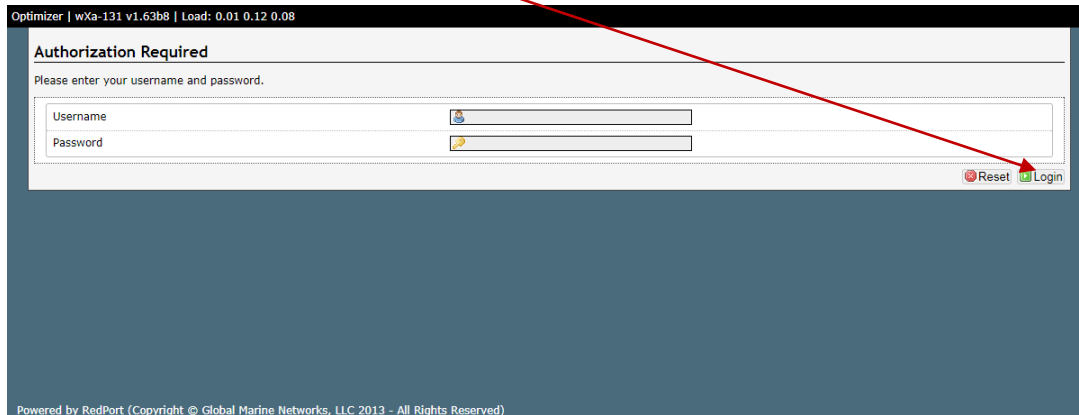
System - Flashing...



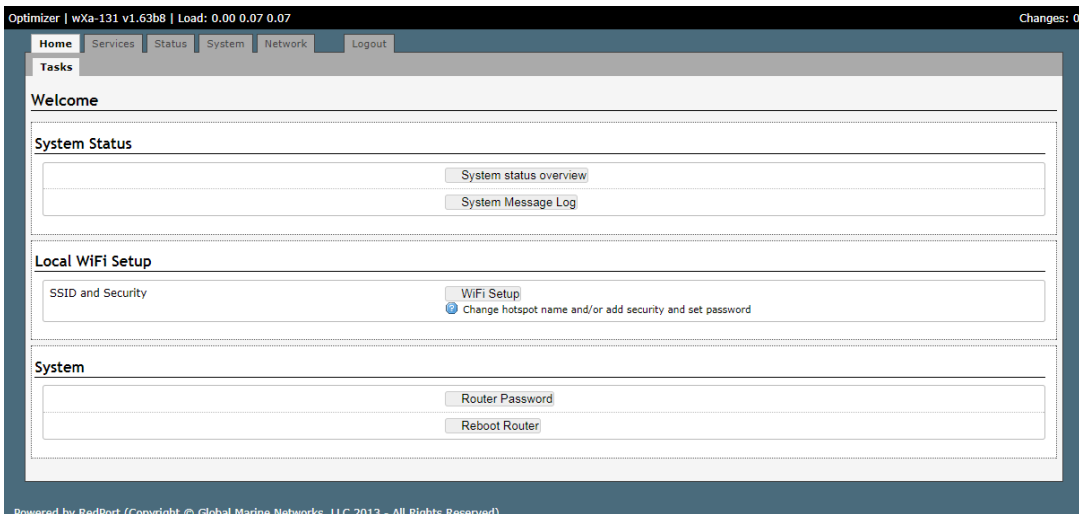
WARNING: Once the Proceed button has been pressed, do not power off the GSP-9600 unit during the upgrade process. Doing so will render the unit unusable.

Step 16 After the firmware update is complete, the GSP-9600 User Interface will display. Perform the following:

- In the **Username** field, enter **superadmin**
- In the Password field, enter **webxaccess**
- Select  .



Step 17 The GSP-9600 User Interface should be displayed. Check the status bar and verify that firmware version **v1.63b8** is displayed.



Step 18 The GSP-9600 firmware upgrade is now complete.