



Sat-Fi Firmware Update v2.3
Instructions

Table of Contents

- 1. OVERVIEW 1
 - ABOUT THIS GUIDE..... 1
 - EQUIPMENT NEEDED 1
- 2. FIRMWARE UPDATE..... 2

1. OVERVIEW

About This Guide

This firmware update guide steps through all aspects of downloading and installing the Sat-Fi firmware. Please be sure to read this guide thoroughly and retain it for future reference.

Equipment Needed

- Computer with Wi-Fi capability
- Globalstar Sat-Fi with Wi-Fi antenna and power adapter
- Globalstar Sat-Fi v2.3 Firmware Updated File

2. FIRMWARE UPDATE

Perform the following to update your Sat-Fi firmware:

Step 1 Download the Sat-Fi v2.3 firmware update to your Wi-Fi enabled computer:

[Click Here>>](#)

NOTE: Save the program to your computer, do not attempt to run the program.

NOTE: For the below steps the Wi-Fi antenna and power cable must be connected to the Sat-Fi. The Sat-Fi external satellite antenna does not need to be connected.

Step 2 Turn on the Sat-Fi unit.

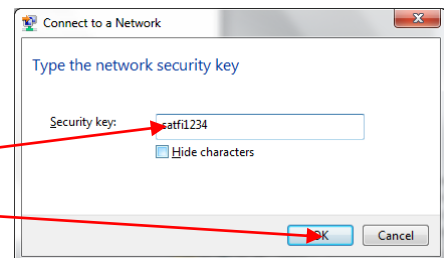
Step 3 On your computer, open the Network Sharing Center and view the Wi-Fi connections that are available.

Step 4 Select **SatFi<XXXXXX>** (<XXXXXX> is a unique identifier for that specific Sat-Fi Unit), and click on **Connect**.



Step 5 The Connect to a Network dialog will be displayed. Perform the following:

- In the **Security Key** field, enter the following: **satfi1234**
- Click on **OK**



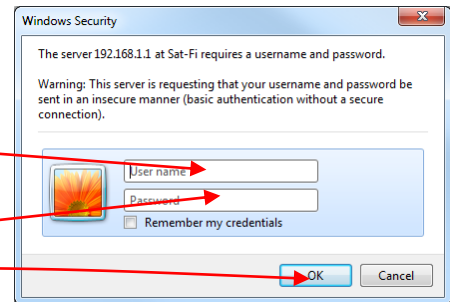
Step 6 The Connection dialog will appear displaying your computer is **Connected** Sat-Fi hotspot.



Step 7 Open a web browser and in the address bar enter <http://192.168.1.1> to access the Sat-Fi user interface.

Step 8 A Windows Security dialog will be displayed. Perform the following:

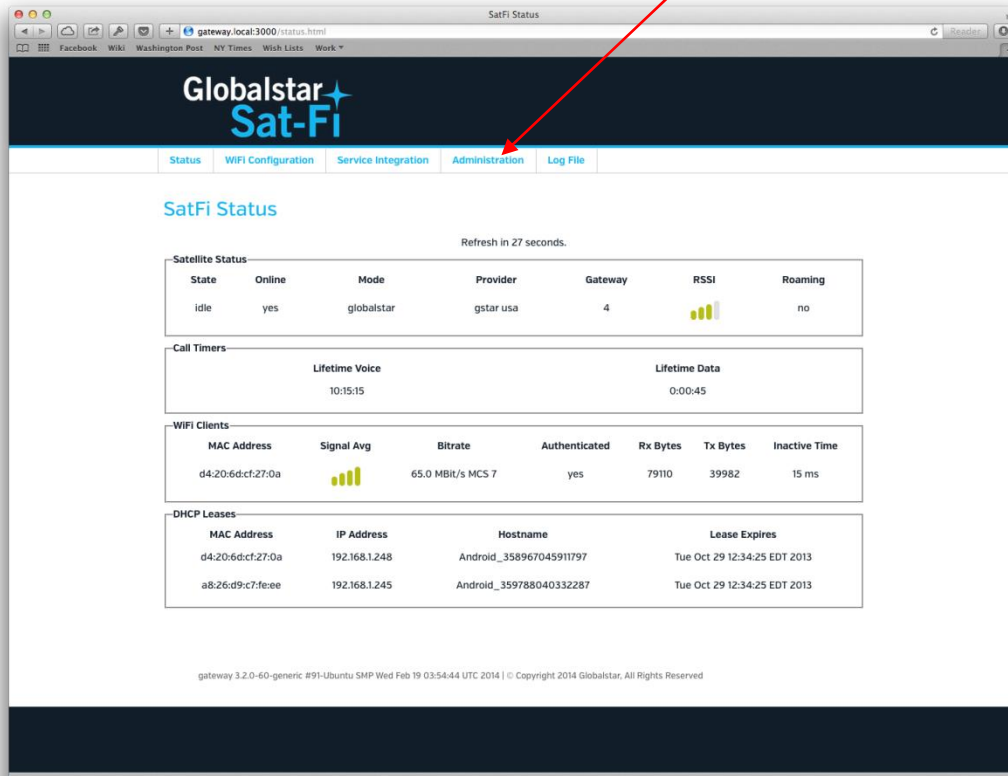
- In the **Username** field, enter the following:
admin
- In the **Password** field, enter the following:
admin
- Click on **OK**



Step 9 The Sat-Fi User Interface should be displayed. Check the bottom of the Status screen and verify the firmware version. If the version is not **v2.3** proceed to the next step

NOTE: If it is v2.3 you do not need to update your firmware.

Step 10 If the version is v2.2 or lower, click on **Administration**.

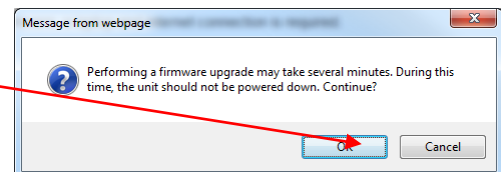


Step 11 The Administration screen will be displayed. Scroll down to the Firmware Upgrade section and click on the **Browse** button and select the Sat-Fi firmware v2.3 file you downloaded in Step 1.



Step 12 Click on the **Upgrade** button to start the firmware upgrade process.

Step 13 A Warning message will be displayed. Click **OK**.



WARNING: Once the OK button has been pressed, do not power off the Sat-Fi unit during the upgrade process. Doing so will render the unit unusable.

Step 14 After the firmware update is complete, the Sat-Fi User Interface will display:

The system is rebooting. Please reconnect to the Wi-Fi network after the system reboots. You will be automatically redirected to the administrative interface once the system has rebooted.

Step 15 Wait for the Sat-Fi to complete the upgrade/reboot process. If your computer is not set to auto connect to the Sat-Fi's Wi-Fi, perform the following:

- Exit out of the program
- Perform Steps 1 through 9

Step 16 The Sat-Fi User Interface should be displayed (if not repeat Step 4 through Step 8). Check the bottom of the Status screen and verify that the firmware version is **v2.3**. If not repeat Step 9 through Step 13

Globalstar Sat-Fi

Status | Wi-Fi Configuration | Service Integration | Administration | Apps

Status

Refresh in 17 seconds.

| Satellite Status | | | | | | |
|------------------|--------|-------|----------|---------|------|---------|
| State | Online | Mode | Provider | Gateway | RSSI | Roaming |
| idle | yes | voice | | -1 | | no |

| Call Timers | |
|----------------|---------------|
| Lifetime Voice | Lifetime Data |
| 0:06:27 | 0:45:11 |

| WiFi Clients | | | | | | |
|-------------------|------------|-------------------|---------------|----------|----------|---------------|
| MAC Address | Signal Avg | Bitrate | Authenticated | Rx Bytes | Tx Bytes | Inactive Time |
| 54:35:30:1e:5a:4d | | 58.5 MBit/s MCS 6 | yes | 205774 | 981243 | 70 ms |

| DHCP Leases | | | |
|-------------------|---------------|----------|------------------------------|
| MAC Address | IP Address | Hostname | Lease Expires |
| 54:35:30:1e:5a:4d | 192.168.1.200 | 9MG4TY1 | Thu Oct 22 13:49:04 UTC 2015 |

V2.3-RC3-NA – Mon Jun 29 18:26:05 EDT 2016 | © Copyright 2015 Globalstar, All Rights Reserved